

GENERAL INFORMATION

Project Name: _____

Item: _____

Quantity: _____

Model: _____ EM103

Length: _____

STANDARD SPECIFICATIONS

- ☐ 1" Round Brushed Stainless Steel #4 Posts
- ☐ 3/8" Clear Tempered Front Glass Panels (max. span 66")
- ☐ 1/4" Clear Tempered Glass End Panels

OPTIONS AND ACCESSORIES

TUBE SIZE OPTIONS

- ☐ 1" Round (Standard)
- ☐ 1" Square
- ☐ 1-1/2" Round
- ☐ 1-1/2" Square

NSF-LISTED FINISH OPTIONS

- ☐ Brushed Stainless Steel #4 (Standard)
- ☐ Stainless Steel #8 (Chrome)
- ☐ Powder Coat Color: RAL # _____

GLASS FINISHES

- ☐ Clear (Standard)
- ☐ Low-Iron
- ☐ Frosted
- ☐ Frosted Logo/Imprint
- ☐ Pattern

GLASS PANEL OPTIONS

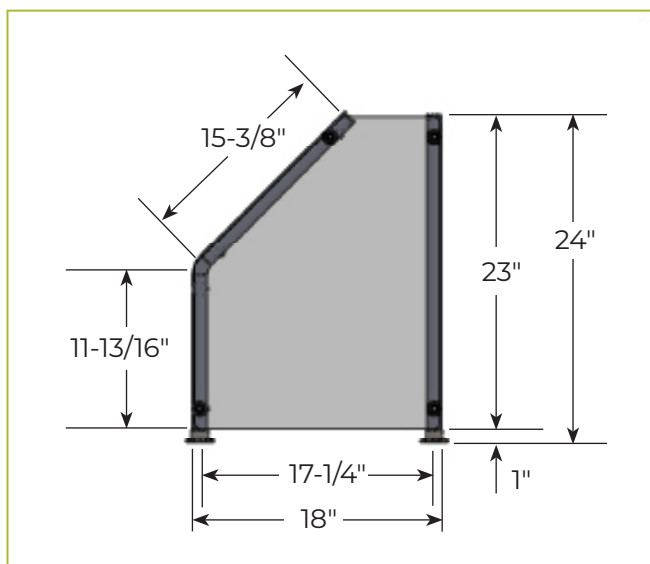
- ☐ 1/4" Glass (max. span 54")
- ☐ 3/8" Glass (max. span 66") (Standard)
- ☐ 1/2" Glass (max. span 72")

MOUNTING OPTIONS

BSI offers a variety of above counter and under counter mount installation solutions based on selected tube size. See Mounting Options pages for more details.

EM103

Full Serve, Straight/Angled Posts



To meet NSF guidelines, end panels are included on all BSI quotations unless specifically excluded. (See end panel page for more details).

LIGHT AND WARMER OPTIONS

All BSI E-Series light and warmer units are not connected to the food shield and require additional posts. E-Series light and warmer units are UL Listed and NSF approved.

Model #	Description
<input type="checkbox"/> 705E	Helios Light & Warmer Unit